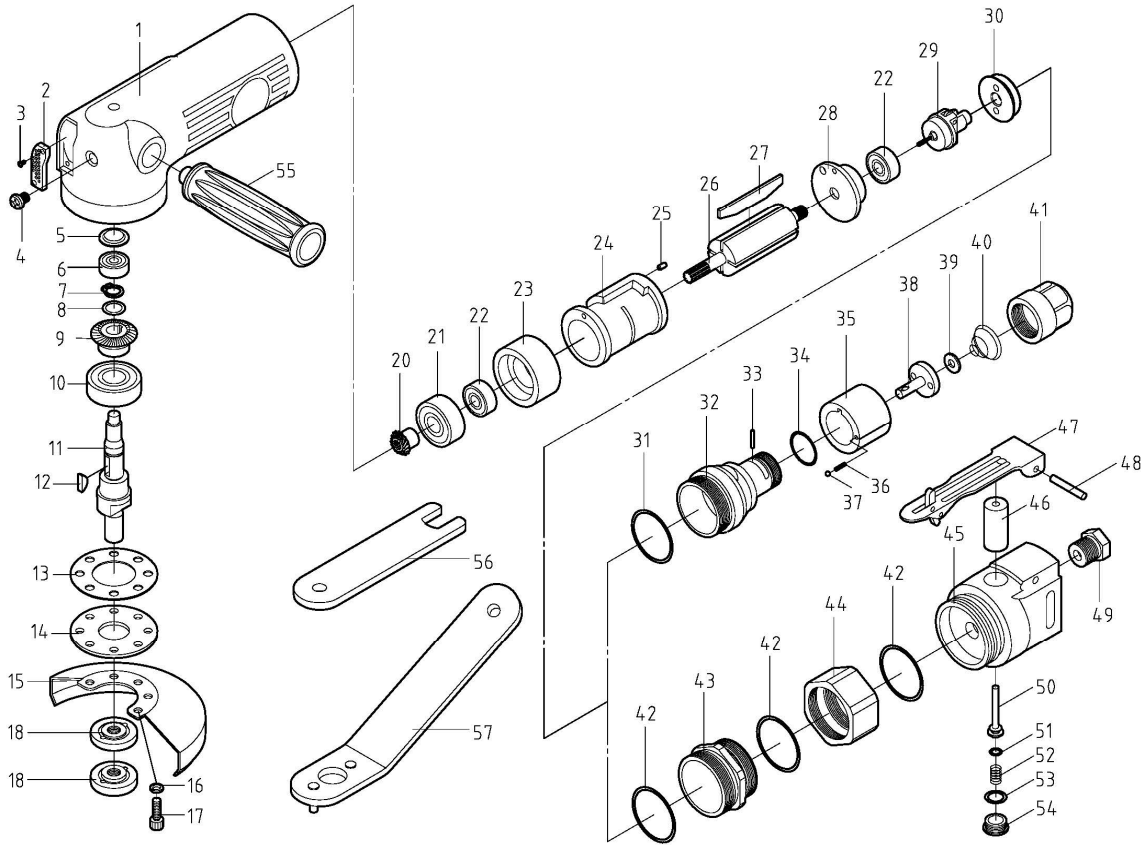


OP-1850 4" & OP-1850A 5" AIR ANGLE GRINDER (LEVER TYPE)
 OP-2850 4" & OP-2850A 5" AIR ANGLE GRINDER (ROTATE TYPE)



REF. NO	PART. NO	DESCRIPTION	Q' TY	REMARK
1		HOUSING	1	●
2		EXHAUST DEFLECTOR	1	●
3		SCREW	2	●
4		SCREW	1	●
5		WASHER	1	●
※6		BALL BEARING	1	●
7		RETAINING RING	1	●
8		WAVE WASHER	1	●
※9		DRIVING GEAR SPINDLE	1	●
※10		BALL BEARING	1	●
11		ANVIL(M10*1.5)	1	■▲
		ANVIL(M14*2)	1	★◆
12		KEY	1	●
13		PACKING	1	●
14		WASHER	1	●
15		4" WHEEL GUARD	1	■▲
		5" WHEEL GUARD	1	★◆
16		SPRING WASHER(M5)	4	●
17		SCREW(M5x15)	4	●
18		LOCK NUT(M10*1.5)	2	■▲
		LOCK NUT(M14*2)	2	★◆
※20		BEVEL GEAR	1	●
※21		BALL BEARING	1	●
※22		BALL BEARING	2	●
23		FRONT PLANT	1	●
24		CYLINDER	1	●
25		ROLL PIN	1	●
26		ROTOR	1	●
※27		ROTOR BLADE	4	●
28		REAR PLATE	1	●
29		REGULATOR VALVE	1	●
30		LOCK NUT	1	●

REF. NO	PART. NO	DESCRIPTION	Q' TY	REMARK
ROTATE TYPE				
※31		O-RING	1	▲◆
32		HANDLE BODY	1	▲◆
33		PIN	1	▲◆
※34		O-RING	1	▲◆
35		REGULATOR DIAL	1	▲◆
36		SPRING	1	▲◆
37		STEEL BALL	1	▲◆
38		REVERSE VALVE	1	▲◆
39		WASHER	1	▲◆
40		CONE SPRING	1	▲◆
41		AIR INLET	1	▲◆
LEVER TYPE				
※42		O-RING	3	■★
43		CYLINDER SET SCREW	1	■★
44		LOCK NUT	1	■★
45		HANDLE BODY	1	■★
46		REVERSE VALVE	1	■★
47		TRIGGER	1	■★
48		SPRING PIN	1	■★
49		AIR INLET	1	■★
50		PIN VALVE ROD	1	■★
※51		O-RING	1	■★
52		SPRING	1	■★
※53		O-RING	1	■★
54		SCREW	1	■★
STANDARD ACCESSORIES				
55		HANDLE	1	●
56		WRENCH	1	●
57		WRENCH(Φ10)	1	■▲
		WRENCH(Φ14)	1	★◆
REMARK: ■=PARTS FOR OP-1850 ★=PARTS FOR OP-1850A ▲=PARTS FOR OP-2850 ◆=PARTS FOR OP-2850A ●=COMMON PARTS				

Remark:Ref No. or Part No. has been noted by ※ are not in warranty.

<http://www.onpin.com.tw>

2022/01/17 DATE : D